


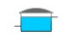



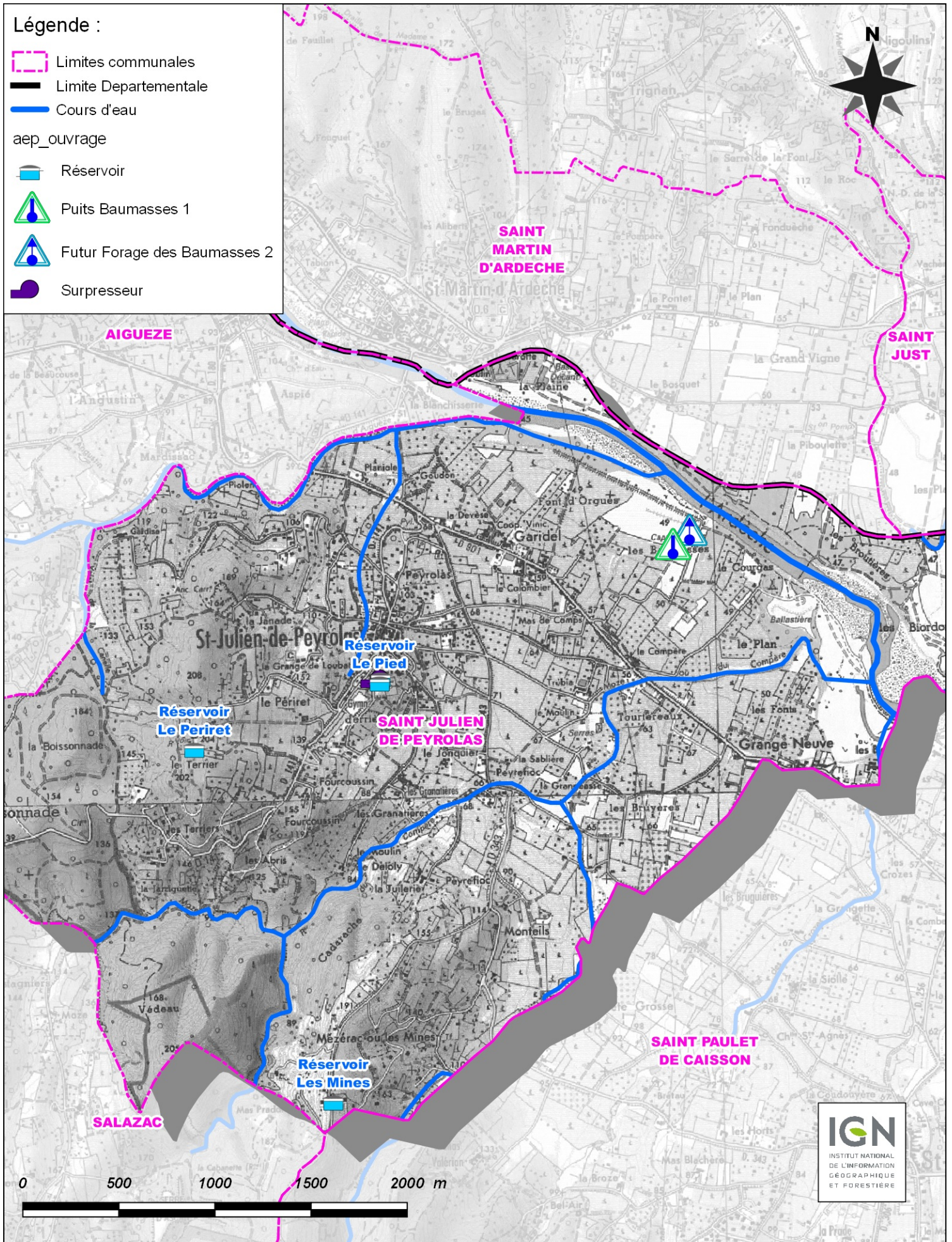


Légende :

-  Limites communales
-  Limite Departementale
-  Cours d'eau

aep_ouvrage

-  Réservoir
-  Puits Baumasses 1
-  Futur Forage des Baumasses 2
-  Surpresseur



Département du Gard
Commune de SAINT JULIEN DE PEYROLAS

DUP	B	échelle 1/25 000
Octobre 2016		Plan N° 01

Dossier d'Utilité Publique - Champ captant des Baumasses
Plan de situation